



# NORTHERN GATEWAY LEISURE PARK

Colchester

## UNIT R1

A development by

**TL**

**TURNSTONE**

United Way, Mile End,  
Colchester CO4 5UP



Colchester  
City Council



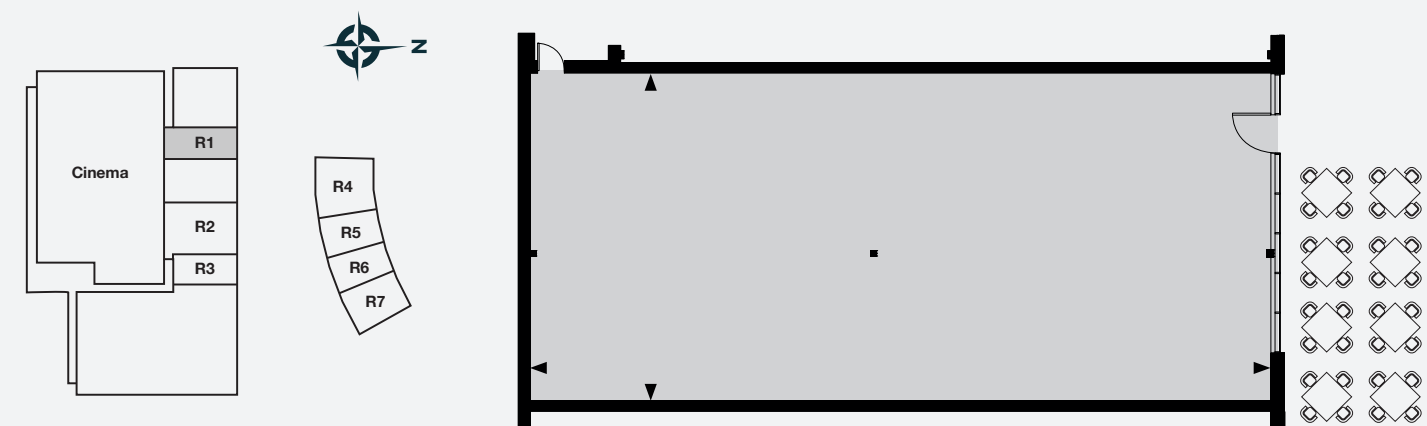


## Unit R1

This high quality contemporary urban design A3-A5 restaurant unit is located in a prime position adjacent to the Cineworld entrance and facing the landscaped piazza with provision for substantial outdoor seating. Early access available for restaurant fit out, in time for entire leisure park opening September 2023.

### Dimensions / Areas

Width	12.37m	40'7"
Depth	29.94m	91'8"
Floor Area	348sq m	3752sq ft



## Northern Gateway Leisure Park

Introducing Turnstone's prestigious 10-acre scheme, part of Colchester Borough Council's major Northern Gateway sports and recreation facility. Located close to Colchester United's Stadium and a David Lloyd Club, this scheme will deliver 200,000 sq ft of new leisure space, complete with a high-quality landscaped piazza, 750 parking spaces, Fastned rapid charging EV points and impressive green credentials.

Turnstone has already secured an array of leisure and dining pre-lets throughout the site including a Travelodge Hotel, 12-screen Cineworld cinema, Hollywood Bowl, indoor golf Puttstars and Jump Street as well as 7 new restaurants with the likes of Kervan Kitchen, Greggs and Wendy's drive-thru.



Colchester Population  
244,700 By 2031



Leisure Park extending  
to over 200,000sq ft



750 Public  
parking spaces



Glazed shopfront  
to restaurant unit



Extensive outdoor  
restaurant seating

## Site Location Map: CO4 5UP



### Wareing Partners

Nathan Wareing  
T: 0207 409 0022  
M: 07831 592152  
E: [nathan@wareingpartners.com](mailto:nathan@wareingpartners.com)



### Whybrow

Ewan Dodds  
T: 01206 577667  
M: 07957 862773  
E: [ewan.dodds@whybrow.net](mailto:ewan.dodds@whybrow.net)

A development by



In partnership

