

A photograph of a woman with dark hair, smiling and looking upwards while holding a plate of food. In the background, another woman is visible, also smiling. The setting appears to be a restaurant or cafe with warm, bokeh-style lights in the background.

NORTHERN GATEWAY LEISURE PARK

Colchester

UNIT R3

A development by

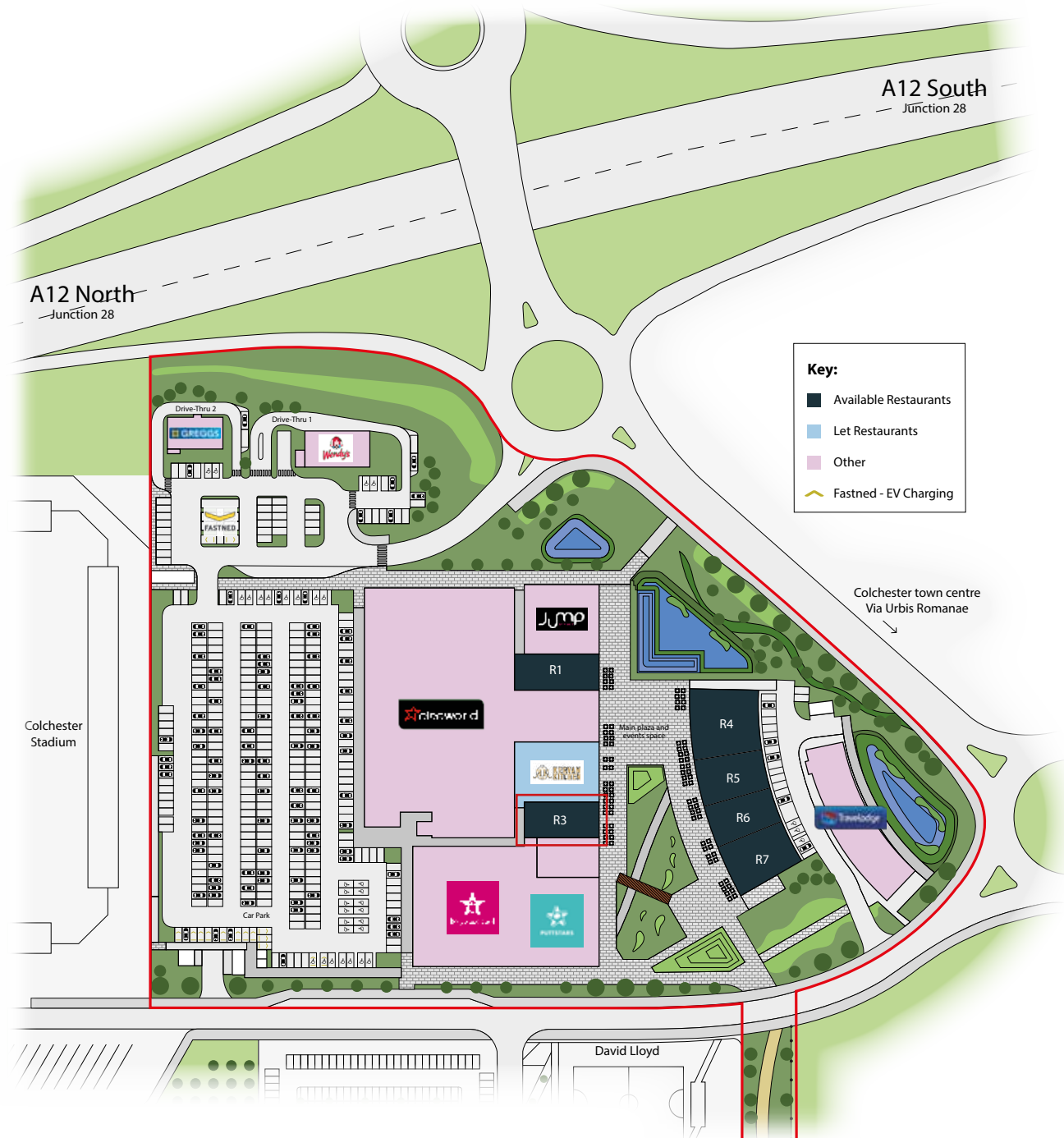
TL

TURNSTONE

United Way, Mile End,
Colchester CO4 5UP



Colchester
Borough Council

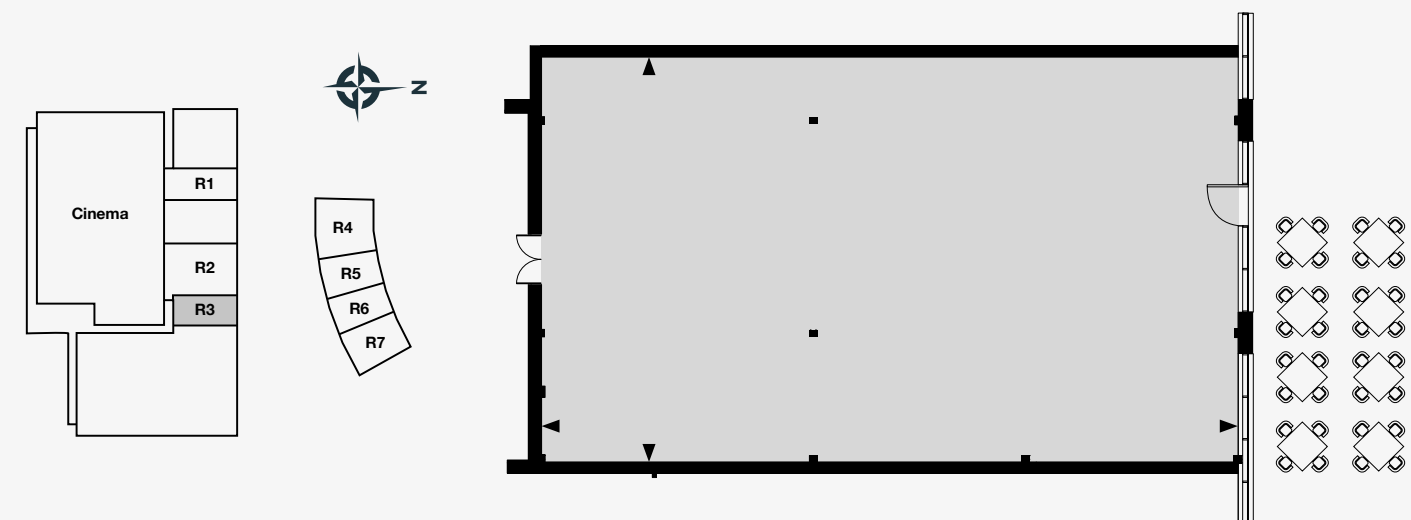


Unit R3

This high quality contemporary urban design A3-A5 restaurant unit is located in a prime position adjacent to the Cineworld entrance and facing the landscaped piazza with provision for substantial outdoor seating. Early access available for restaurant fit out, in time for entire leisure park opening September 2023.

Dimensions / Areas

Width	14.27m	46'9"
Depth	25.54m	80'6"
Floor Area	350sq m	3767sq ft



Northern Gateway Leisure Park

Introducing Turnstone's prestigious 10-acre scheme, part of Colchester Borough Council's major Northern Gateway sports and recreation facility. Located close to Colchester United's Stadium and a David Lloyd Club, this scheme will deliver 200,000 sq ft of new leisure space, complete with a high-quality landscaped piazza, 750 parking spaces, Fastned rapid charging EV points and impressive green credentials.

Turnstone has already secured an array of leisure and dining pre-lets throughout the site including a Travelodge Hotel, 12-screen Cineworld cinema, Hollywood Bowl, indoor golf Puttstars and Jump Street as well as 7 new restaurants with the likes of Kervan Kitchen, Greggs and Wendy's drive-thru.



Colchester Population
244,700 By 2031



Leisure Park extending
to over 200,000sq ft



750 Public
parking spaces



Glazed shopfront
to restaurant unit



Extensive outdoor
restaurant seating

Site Location Map: CO4 5UP



Wareing Partners

Nathan Wareing
T: 0207 409 0022
M: 07831 592152
E: nathan@wareingpartners.com



Whybrow

Ewan Dodds
T: 01206 577667
M: 07957 862773
E: ewan.dodds@whybrow.net

A development by



In partnership

