



# NORTHERN GATEWAY LEISURE PARK

Colchester

## UNIT R6

A development by



TURNSTONE

United Way, Mile End,  
Colchester CO4 5UP



Colchester  
City Council



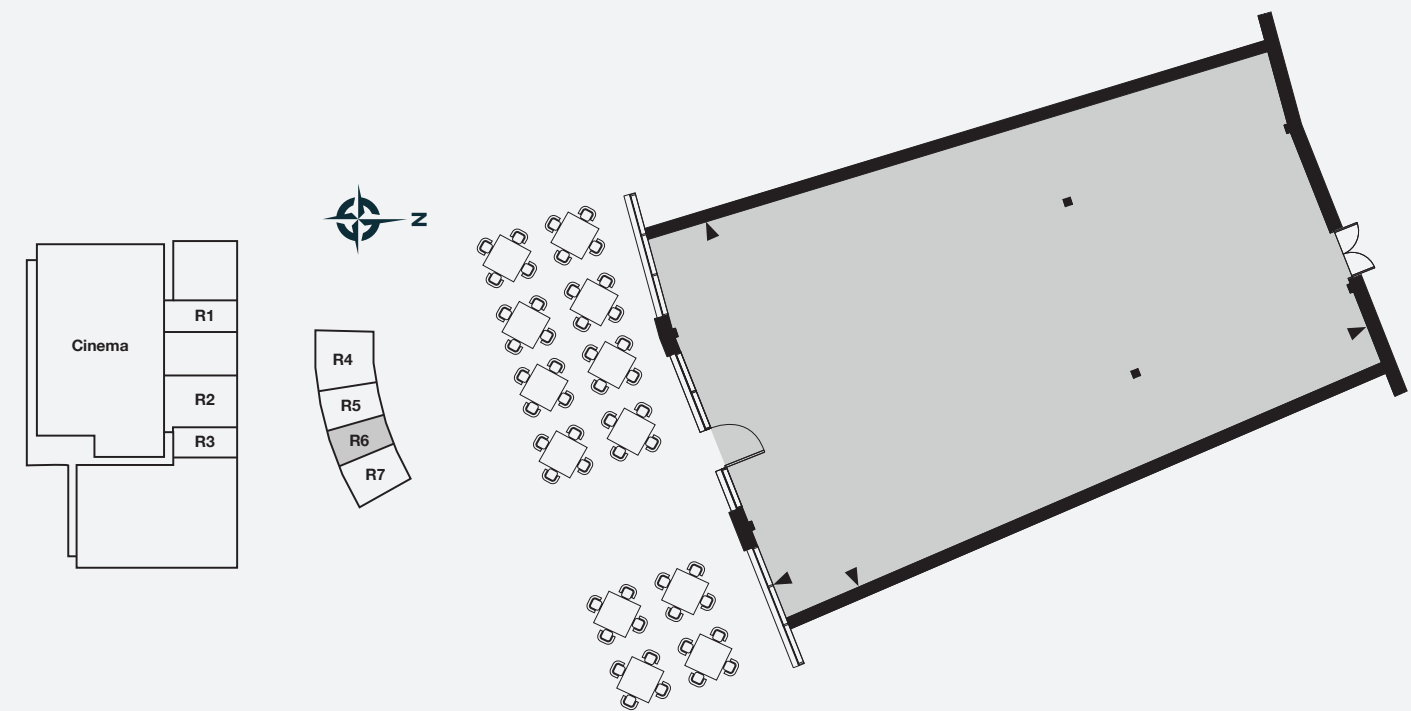


## Unit R6

This high quality contemporary urban design A3-A5 restaurant unit is located in a prime position adjacent to the Cineworld entrance and facing the landscaped piazza with provision for substantial outdoor seating. Unit R6 is also close to Colchester United's stadium and a David Lloyd Club. Early access available for restaurant fit out, in time for entire leisure park opening September 2023.

### Dimensions / Areas

Width	13.80m	45'3"
Depth	22.52m	73'10"
Floor Area	286sq m	3077sq ft



## Northern Gateway Leisure Park

Introducing Turnstone's prestigious 10-acre scheme, part of Colchester Borough Council's major Northern Gateway sports and recreation facility. Located close to Colchester United's Stadium and a David Lloyd Club, this scheme will deliver 200,000 sq ft of new leisure space, complete with a high-quality landscaped piazza, 750 parking spaces, Fastned rapid charging EV points and impressive green credentials.

Turnstone has already secured an array of leisure and dining pre-lets throughout the site including a Travelodge Hotel, 12-screen Cineworld cinema, Hollywood Bowl, indoor golf Puttstars and Jump Street as well as 7 new restaurants with the likes of Kervan Kitchen, Greggs and Wendy's drive-thru.



Colchester Population  
244,700 By 2031



Leisure Park extending  
to over 200,000sq ft



750 Public  
parking spaces



Glazed shopfront  
to restaurant unit



Extensive outdoor  
restaurant seating

## Site Location Map: CO4 5UP



### Wareing Partners

Nathan Wareing  
T: 0207 409 0022  
M: 07831 592152  
E: [nathan@wareingpartners.com](mailto:nathan@wareingpartners.com)



### Whybrow

Ewan Dodds  
T: 01206 577667  
M: 07957 862773  
E: [ewan.dodds@whybrow.net](mailto:ewan.dodds@whybrow.net)

A development by



In partnership

